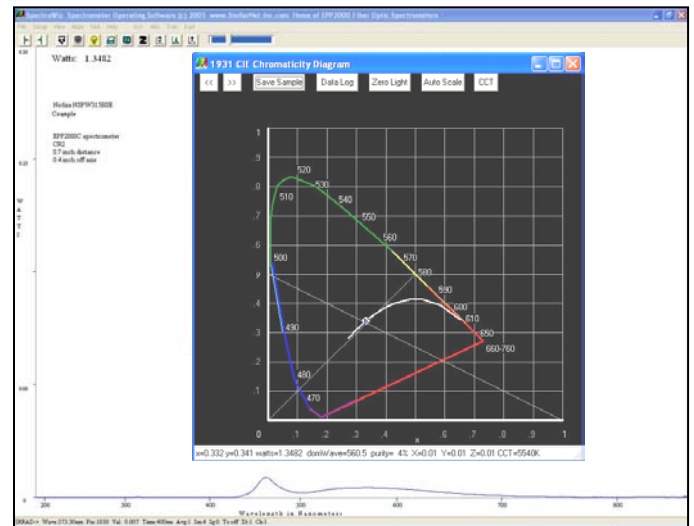


LED Measurement Systems

➤ NIST Calibrated LED Metrology

- Reliably measure LED output in Lumens (Luminous Flux) and Watts (Radiant Flux), watts/m², microwatts/cm², lumens/m², moles per second, PAR, Footcandles, mcd and also the CRI and new CQS and for white LEDs.
- Real-time 1931 CIE Chromaticity diagram for xy chromaticity, Dominant Wavelength, Purity, and Correlated Color Temperature (CCT)
- Irradiance Calibration service by StellarNet using NIST traceable lamps or at customer's facility using SpectraWiz software.
- Calibration accuracy within 10% of NIST at detector integration setting used for calibration.
- DUAL-DSR options available to cover the extended 200-1700nm range.



➤ SpectroRadiometric Accessories

- **Miniature 2" Integrating Light Sphere**
 - Collects light with 180° field of view
 - 5/8" diameter input port
- **Larger Integrating Light Sphere options**
 - LS4: 4 inch sphere
 - LS6: 6 inch sphere
 - Customer supplied for calibration
- Battery pack options for field measurements
- Simple USB2 interface to Netbook & PC's

Item	Description	Price
SpectroRadiometers with SpectraWiz software for LED and light measurements		
BLUE-Wave-VIS	Smallest SpectroRadiometer 16bit, USB2 interface, 50um slit, VIS model for 350-1100nm	\$2500
BLACK-Comet	SpectroRadiometer 16bit, USB2 interface, choose model "C"200-850nm or "CXr"280-900nm	\$2750
BLACK-Comet-SR	"Super Range" SpectroRadiometer 16bit, USB2, choose "C"200-1080nm or "CXr"220-1100nm	\$3495
RED-Wave-NIR	SpectroRadiometer for NIR 900-1700nm, connects with VIS range units for extended coverage	\$13,125
Fiber Optic Accessories		
CR2	1/4" Miniature cosine receptor attaches to fiber tip or can be direct attached via SMA-coupler	\$35
CR2-AP	Aperture mounts on CR2 for 10x brighter LEDs –equivalent to 10%T corrected by SpectraWiz	\$125
IC2	2" Miniature Integrating Sphere provides accurate LED xy-chromaticity color measurements	\$495
IS6	6" Integrating Sphere with SMA905 fiber optic interface and 2.0" light receptor input port	\$1745
IS12	12" Integrating Sphere with SMA905 fiber optic interface, open to insert LED bulb or arrays, includes internal calibration lamp for lumen flux and post fixture for sample mount.	\$3495
TP1	Miniature Tripod for Integrating Light Sphere or CR2 cosine receptor	\$49
F600	Fiber optic cable sends signal from light receptor to Spectrometer (add \$55 for UV-SR fiber)	\$140
NIST-Traceable Irradiance Calibrations (add \$125 for traceable calibration document)		
IRRAD-CAL-UV	UV Irradiance calibration for 200-600nm range in Watts/m ² /nm	\$250
IRRAD-CAL	VIS or NIR Irradiance calibration for 300-1100nm or 900-1700nm range in Watts/m ² /nm	\$250
RAD-CAL	Radiant power calibration (flux) in Watts/nm and Lumen/nm (for LEDs) 300-1100nm	\$250
RAD-SRCAL	Radiance calibration in Watts/sr/m ² /nm can measure Cd/m ² /nm - requires CR-LENS for CR2	\$250